

**HARO**<sup>®</sup>  
Quality Flooring

PARQUET  
2-LAYER  
2017 / 2018

# Welcome to HARO



Company management in the fourth and fifth generations:  
Peter Hamberger and Dr. Peter M. Hamberger

The success of our brand is no coincidence. Our family business has a tradition in woodworking that goes back 150 years. We combine our love for wood as a natural product with a passion for continuous innovation when it comes to natural beauty and comfort. Our pioneering role when it comes to trends, our tireless striving for the highest quality and our consistently sustainable actions have made us Germany's leading parquet manufacturer. In over 90 countries our brand stands for parquet floors that fulfil highest requirements, whether it is for the Plank 1-Strip or Longstrip models, the Plaza wide board or our 2-layer range for professional installers.

Explore HARO's wide variety of products and be inspired by the most beautiful parquet floors for your home.

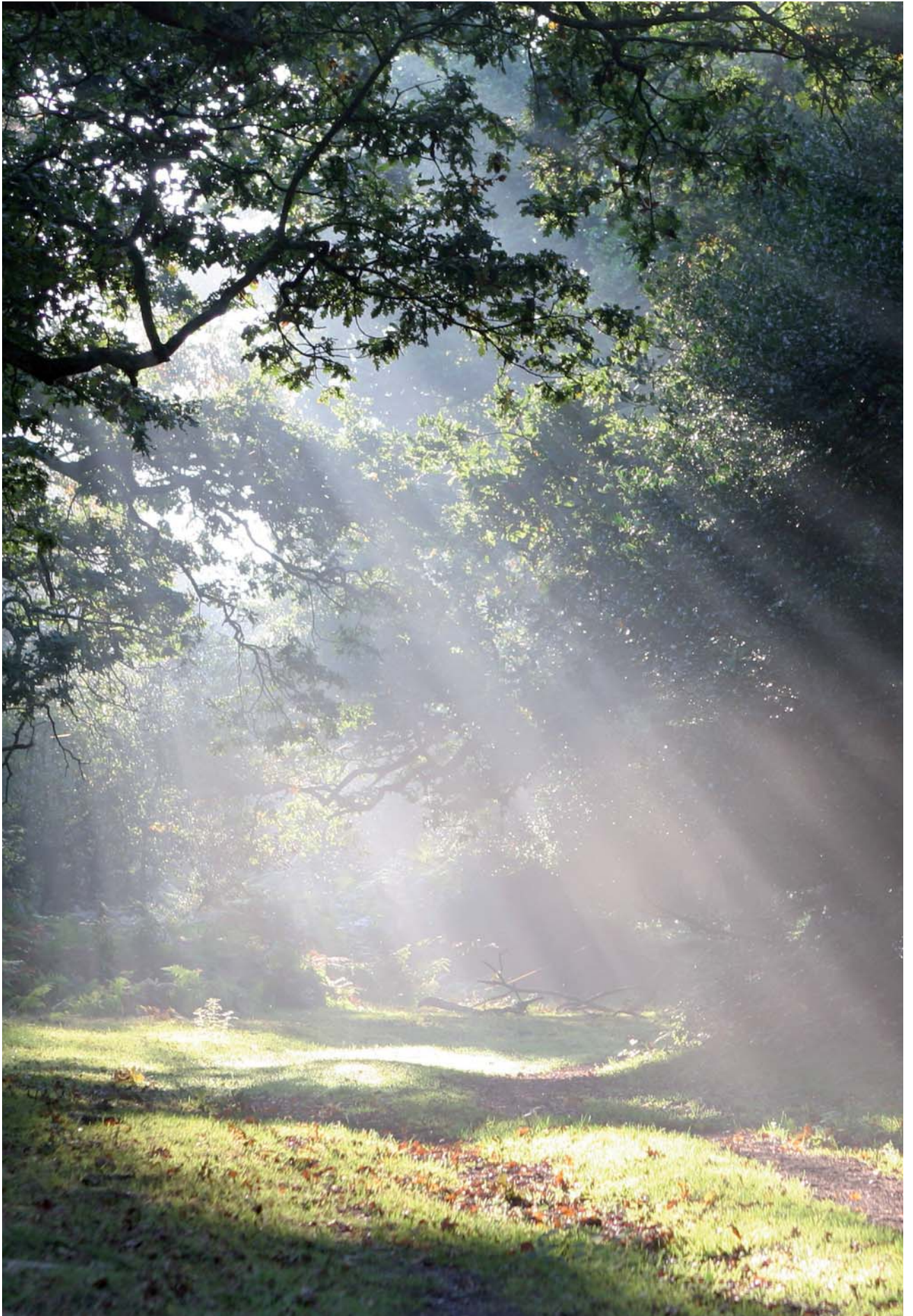
Yours

A handwritten signature in black ink that reads "Peter Hamberger".

Peter Hamberger

A handwritten signature in black ink that reads "Peter Hamberger".

Dr. Peter M. Hamberger





HARO PROFESSIONAL  
PARQUET 4000  
STRIP PLANK SCALA  
OAK  
SAUVAGE  
BRUSHED 2V  
naturaDur



# Table of contents

---

Formats	08
---------	----

---

Facts about Parquet in short Finishes   Grades   Quality	09 – 11
--	---------

---

Facts about Parquet in short Designs	12 – 13
--------------------------------------	---------

---

The effect of skirtings	14 – 15
-------------------------	---------

---

Strip Allegro	16 – 23
---------------	---------

---

Strip Prestige	26 – 29
----------------	---------

---

Strip Plank Scala	30 – 35
-------------------	---------

---

Strip Plank Maxim	36 – 45
-------------------	---------

---

Strip Trio SL / Trio	46 – 47
----------------------	---------

---

Range Overview	48 – 51
----------------	---------

---

Installation	52 – 53
--------------	---------


---

Cleaning, Care, Accessories	54 – 55
-----------------------------	---------

---



HARO PROFESSIONAL  
PARQUET 4000  
STRIP ALLEGRO  
SMOKED OAK  
permaDur



---

## HARO Parquet with 2-layer construction – for highest standards

---

Select a floor. Have it installed. Live!

Choose the best and insist on the excellent quality of HARO Strip Parquet: These high-quality floors with 2-layer construction guarantee the highest possible stability of value for your customers when installed by a professional installer. Spacious formats are gaining ever more popularity. As this is also the case for glued-down parquet floors, HARO offers 5 different board designs: From the classical Strip Allegro to the trendy Strip Plank Maxim in XL format.

---

# Facts about Parquet in short: Formats

---

## 1. STRIP PARQUET ALLEGRO

- Timeless, classic design – ideal for a wide variety of installation patterns
- Available with permaDur high finish, naturaLin *plus* natural oil finish and naturaDur, the matt surface finish
- Dimensions approx. 10x70x490 mm# (13/32" x 2 3/4" x 19 9/32")
- Top layer thickness: approx. 3.5 mm (1/8")
- Core layer made of solid spruce fingerstrips

## 2. STRIP PARQUET PRESTIGE

- Compact Plank 1-Strip format – ideal for making small rooms look larger
- Available with naturaLin *plus* natural oil finish and naturaDur, the matt surface finish
- Dimensions approx. 10x120x1000 mm (13/32" x 4 23/32" x 39 3/8")
- Top layer thickness: approx. 3.5 mm (1/8")
- Core layer made of solid spruce fingerstrips

## 3. STRIP PARQUET PLANK SCALA

- A generous and elegant format for a well-balanced spacious effect
- Available with naturaLin *plus* natural oil finish and naturaDur, the matt surface finish
- Dimensions approx. 10x160x1750 mm (13/32" x 6 5/16" x 68 29/32")
- Top layer thickness: approx. 3.5 mm (1/8")
- Core layer made of solid spruce fingerstrips

## 4. STRIP PARQUET PLANK MAXIM

- Original Plank 1-Strip format
- Available with naturaLin *plus* natural oil finish and naturaDur, the matt surface finish
- Dimensions approx. 10.5 x 180 x 2200 mm (13/32" x 7 3/32" x 86 5/8")
- Top layer thickness: approx. 3.5 mm (1/8")
- HDF coreboard, grooved for easier installation
- Easy installation thanks to the 'tongue-and-groove joint plus' insertion guide

## 5. STRIP PARQUET TRIO SL

- Longstrip look
- Dimensions 10x180x1095 mm (13/32" x 7 3/32" x 43 1/8")
- Top layer thickness: approx. 2.5 mm (3/32")
- Moisture-control HDF E1 base layer
- 20% quicker installation compared to standard strip parquet
- Easy installation thanks to the tongue-and-groove 'plus' joint with insertion guide

## 6. STRIP PARQUET TRIO

- Original Longstrip format and look
- Brushed with naturaLin *plus* finish
- Dimensions: 10 x 180 x 2200 mm (13/32" x 7 3/32" x 86 5/8")
- Moisture-control HDF E1 base layer
- Top layer thickness: approx. 3.5 mm (1/8")
- Easy installation thanks to the tongue-and-groove 'plus' joint with insertion guide





# Facts about Parquet in short: Finishes

Surface finish: Our surface treatments maintain the natural appeal of your parquet floor. At the same time, they protect it from external influences and preserve the radiance of your Parquet Floor in a natural way. This allows you to adapt your favourite parquet to your lifestyle, depending on the type of wear and tear your floor is subject to.

## permaDur

HIGH FINISH

Durable high-finish

For all those who are looking for a particularly durable parquet floor that is easy to maintain.

Care

- Dry cleaning with broom or vacuum cleaner.
- Damp cleaning with clean & green natural when required.

## naturaDur

MATT SURFACE FINISH

NEW

The natural matt surface finish for the best possible protection

For those who want the look of a natural oil surface in combination with the perfect protection of a pre-finished floor that is easy to maintain.

Care

- Dry cleaning with broom or vacuum cleaner.
- Damp cleaning with clean & green natural when required.

## naturaLin<sup>plus</sup>

NATURAL OIL FINISH

The “breathing” natural oil finish

For all those who are looking for a particularly expressive and natural parquet floor.

Care

- Dry cleaning with broom or vacuum cleaner.
- Regular damp wiping with naturaLin Soap or clean & green natural protects against dirt, as well as wear and tear.
- Renewal of the surface finish with naturaLin Oil or clean & green aqua oil after heavy wear and tear.

**clean & green**  
Quick, easy and natural maintenance of all floors



We are fully committed to the quality of our floors. In order to make it possible for you to enjoy the beauty of your Parquet Floor for as long as possible, we have developed a range of care products that make the cleaning and maintenance of your floor simple and efficient. Thorough cleaning, effective maintenance and perfect protection with minimum effort. This will guarantee that your Parquet Floor will be an eye-catcher for many years to come.

Further details can be found in our floor maintenance video at [www.haro.com](http://www.haro.com)



Parquet Cleaner 'natural'  
Eco floor care concentrate  
For regular cleaning of all parquet surfaces.

Intensive Cleaner 'active'  
Eco floor cleaner concentrate.  
For the basic cleaning of parquet.

Parquet Care 'aqua oil'  
Special care product for oiled surfaces.

Parquet Care 'aqua oil white/  
aqua oil black':

Special care product for oiled white  
or dark surfaces.

Floor care aqua shield  
Durable refurbishing and maintenance  
of prefinished parquet.

# Facts about Parquet in short: Grades

The sophisticated processing guarantees that you always get a unique floor of the highest quality. Only carefully selected precious woods are used for the top layer. For the sub-construction we also make an effort to constantly guarantee the brand-name quality of HARO Strip Parquet.



### Exquisit/Exklusiv

- Choice top-layer strips with an even texture and colour
- Look: subtle, distinguished, elegant



### Trend

- Natural wood grain with a few small knots
- Look: Natural, classic, timeless



### Terra

- Natural, rustic wood texture with large amount of knots
- Look: vibrant, rustic



### Tundra

- Wider colour variances in the wood
- Look: vivid, vibrant
- for Oak: a natural share of sapwood



### Favorit

- Well-balanced combination of subtle and vibrant top layer strips
- Look: appealing colour variances, vibrant effect



### Markant

- Wood grain with natural amount of knots
- Look: Natural, classic, timeless



### Standard

- Subtle variances in colour and vibrant wood texture with a small amount of knots
- Look: vibrant, authentic



### Sauvage

- Natural to vibrant wood texture with a greater amount of knots
- Cracks, filled points and worm holes possible
- Look: trendy, rustic



### Country

- Strong variances in colour, may contain light-coloured knots and sapwood (Oak, Walnut) or dark heartwood (Ash)
- Look: vibrant, expressive

	Calm/elegant	Natural	Vibrant
Exquisit	██████████		
Trend		██████████	
Markant		██████████	
Terra/Tundra			██████████
Favorit		██████████	
Standard		██████████	
Country			██████████
Sauvage		██████████	

## Two-layer construction with solid-wood base layer for glue-down installation



1. PERMADUR natural matt finish or naturaLin plus natural oil finish
2. Top layer with a thickness of approx. 3.5 mm, 1/8" made of carefully selected precious wood
3. Solid spruce fingerstrips or grooved HDF-E1 coreboard as base layer (for Strip Plank Maxim and Strip Trio)

---

# Facts about Parquet in short: Quality

---

Quality has the highest priority at HAMBERGER. Every board is examined under the aspect of origin, processing and usability. This is done under a higher level of strain than would ever occur in normal daily life. Our goal is for you to have many years of lasting pleasure with our parquet. It almost goes without saying that for this we offer 30 years warranty.



#### Sustainability

Hamberger Flooring GmbH & Co. KG has been PEFC-certified since the beginning of 2004. HARO PARQUET is the first parquet brand to be 100% PEFC certified. This means that all the wood we use is sourced from certified, sustainably managed forests.



#### Real Wood

Hamberger Flooring GmbH & Co. KG leads the way in implementing the Real Wood Campaign to ensure real wood floors are correctly identified as such.



#### ISO 9001

Our quality management has been certified in accordance with DIN EN ISO 9001: 2000 since 1995. It secures workflows in the company and consequently contributes to maintaining a consistent product quality.



#### ISO 14001

With the certification according to DIN EN ISO 14001:2004, we have committed ourselves to active environmental management since 1998.



#### HARO Warranty

In addition to the statutory warranty terms, HARO also provides additional warranties for various product groups. Please note the respective warranty conditions.



#### Eco label

The Blue Angel has proven the environmental compatibility of our products since 1992.



#### CE

The CE label confirms that HARO floor coverings comply with all essential European safety and health directives.



#### vdp/FEP

Hamberger Flooring GmbH & Co. KG is a member of the Verband der Deutschen Parkettindustrie e.V. (Association of the German Parquet Industry) and of the FEP, the European Federation of the Parquet Industry.

---

# Facts about Parquet in short: Designs

---

## DESIGN CREATES ROOMS

With the expertise of HARO professional partners and the numerous installation possibilities of HARO Strip Parquet, floor plans and ceiling heights hardly matter anymore. Expert advice shows how rooms can be designed in a completely new way with HARO Strip Parquet. The board format alone can have astonishing spacious effects: Parquet floors with large formats, for example, make a room appear more spacious than smaller board formats. In order to meet all customer wishes, the HARO professional partner will first of all ask for individual wishes: Should the room impression be calm or rather vibrant? The preferred interior design style also plays an important role. Whether classic, traditional or modern – the HARO professional partner always has the right idea.



Use our interactive HARO Floor Studio at [www.haro.com](http://www.haro.com) to get an impression of what the chosen floor would look like.

The "herringbone" arrangement of the boards creates variety and a play of light achieving a sense of vibrancy. If at the same time, the overall impression of the floor is also to be balanced and calm, a herringbone laying pattern with Strip Parquet Prestige is recommended. A room looks refreshingly different when the parquet has been installed in a regular pattern (English bond). It has a vibrant and fresh look.

With Strip Parquet Allegro, this installation style is also ideal for smaller rooms. On the other hand, the trendy Strip Parquet design Plank Maxim makes the same room look much more spacious and bigger.



---

# Spatial effect with skirtings

---

HARO Skirtings are impressive and effective – whether as an eye-catcher or as a purely functional element: With this accessory, various spacious effects can be created. The vast range opens up a variety of opportunities for creative design ideas – in combination and perfect interplay with the high-quality HARO floor coverings.



Special: Emphasis of the room's elegance.



Extraordinary: A huge selection

With HARO Skirtings, professionals can optimally finish their installation work, either in perfect harmony, matching the style and colour of the flooring, or with appealing opposites and exciting colour contrasts. HARO also sets accents with its array of ideas for formats and styles: narrow or wide, elegant or modern, simple or opulent.



Gala performance: Noble white as an eye-catcher



Creative: More than pure functionality



Sophisticated: Playing with nuances



The classic: perfect finish, tone-in-tone



HARO PROFESSIONAL  
PARQUET 4000  
STRIP ALLEGRO  
BEECH STEAMED  
TREND  
permaDur  
INSTALLATION PATTERN: HERRINGBONE

# Strip Allegro







The classic for versatile living.

HARO Strip Parquet Allegro is a real all-rounder: Due to its versatile installation possibilities it is suitable as a basis for a classic interior design with stylish furniture as well as for a loft look with a modern ambience. It also accompanies traditional living styles in a variety of ways: in light or dark tones, and always very elegant.



HARO PROFESSIONAL  
PARQUET 4000  
STRIP ALLEGRO  
AMBER ROBINIA  
FAVORIT  
permaDur





HARO PROFESSIONAL  
PARQUET 4000  
STRIP ALLEGRO  
OAK  
TREND  
naturalin plus | permaDur  
INSTALLATION PATTERN: HERRINGBONE



HARO PROFESSIONAL  
PARQUET 4000  
STRIP ALLEGRO  
OAK PEARL GREY LIMEWASHED  
*TREND*  
*BRUSHED*  
permaDur



HARO PROFESSIONAL  
PARQUET 4000  
STRIP ALLEGRO  
OAK PURO CARAMEL  
*TREND*  
*BRUSHED*  
permaDur





HARO PROFESSIONAL  
PARQUET 4000  
STRIP ALLEGRO  
SMOKED OAK  
naturalin plus | permaDur  
INSTALLATION PATTERN: HERRINGBONE







HARO PROFESSIONAL  
PARQUET 4000  
STRIP PRESTIGE  
OAK SAND PURE  
MARKANT  
naturaDur  
INSTALLATION PATTERN: HERRINGBONE

# Strip Prestige





#### Timeless and unique

The name tells you everything: HARO's Strip Parquet Prestige is perfect for creating rooms which reflect your sense of style. It is an impressive and prestigious floor thanks to its single-strip top layer. One of the floor's other outstanding features is not visible at first sight: Strip Parquet Prestige is also suitable for installation in bathrooms and kitchen areas. Now also with the option of a herringbone installation.



HARO PROFESSIONAL  
PARQUET 4000  
STRIP PRESTIGE  
OAK PURO WHITE  
MARKANT  
BRUSHED  
naturalin plus



HARO PROFESSIONAL  
PARQUET 4000  
STRIP PRESTIGE  
AFRICAN OAK  
MARKANT  
naturaLin plus



HARO PROFESSIONAL  
PARQUET 4000  
STRIP PLANK SCALA  
OAK  
MARKANT  
BRUSHED 2V  
naturaLin plus

# Strip Plank Scala





#### Authentic comfort

Very modern or minimally furnished rooms can also emanate authentic cosiness: it all depends on the floor. Haro's Strip Plank Scala instantly lifts a room.

With its long format, this Plank is the elegant way to enjoy a stylish home with the highest quality.



HARO PROFESSIONAL  
PARQUET 4000  
STRIP PLANK SCALA  
SMOKED OAK  
MARKANT  
BRUSHED 2V  
naturaLin plus





HARO PROFESSIONAL  
PARQUET 4000  
STRIP PLANK SCALA  
OAK PURO INVISIBLE  
SAUVAGE  
BRUSHED 2V  
naturaLin plus



HARO PROFESSIONAL  
PARQUET 4000  
STRIP PLANK SCALA  
OAK PURO GREY  
SAUVAGE  
BRUSHED 2V  
naturaLin plus



HARO PROFESSIONAL  
PARQUET 4000  
STRIP PLANK SCALA  
OAK  
SAUVAGE  
BRUSHED 2V  
naturaDur





HARO PROFESSIONAL  
PARQUET 4000  
STRIP PLANK MAXIM  
OAK  
MARKANT  
BRUSHED 4V  
naturaLin plus

# Strip Plank Maxim





The ideal cast to show your sense of style

With this Strip Parquet variant by HARO, you bring an elegant Plank format with a length of 2200 mm into your home. Look forward to a combination of the most trendy design with the highest-quality laying method: glue-down installation. With the Strip Plank Maxim, you will have a floor that guarantees lasting enjoyment.



HARO PROFESSIONAL  
PARQUET 4000  
STRIP PLANK MAXIM  
OAK  
SAUVAGE  
BRUSHED 4V  
naturalin plus





HARO PROFESSIONAL  
PARQUET 4000  
STRIP PLANK MAXIM  
OAK SAND WHITE  
SAUVAGE  
BRUSHED 2V  
naturaDur





HARO PROFESSIONAL  
PARQUET 4000  
STRIP PLANK MAXIM  
OAK SAND GREY  
MARKANT  
BRUSHED 2V  
naturaDur



HARO PROFESSIONAL  
PARQUET 4000  
STRIP PLANK MAXIM  
SMOKED OAK SAUVAGE  
BRUSHED 4V  
naturaLin plus





HARO PROFESSIONAL  
PARQUET 4000  
STRIP PLANK MAXIM  
OAK PURO WHITE  
MARKANT  
BRUSHED 4V  
naturalin plus



HARO PROFESSIONAL  
PARQUET 4000  
STRIP PLANK MAXIM  
OAK SAND PURE  
MARKANT  
BRUSHED 2V  
naturaDur



HARO PROFESSIONAL  
PARQUET 4000  
STRIP TRIO SL  
OAK  
FAVORIT  
permaDur

# Strip Trio SL / Trio





### Vibrant Longstrip look - quick to install

Do you want to lift the ambience of a room? In this case, TRIO is just the right parquet! You will be amazed at how quickly and perfectly your parquet installer fits this beautiful floor under your feet: this is achieved by a number of technical innovations, such as the tongue and groove joint plus with insertion guide and the grooved back, with which the parquet specialist HARO once again proves its power to innovate.

# Range Strip Allegro

**Pm**: permaDur high finish | **nd**: naturaDur matt surface finish | **nL**: naturaLin *plus* natural oil finish

Allegro  
OAK LIGHT WHITE  
TREND  
brushed  
**Pm** ID no. 531 992



Allegro  
OAK PURO WHITE  
TREND  
brushed  
**nL** ID no. 531 956

Allegro  
OAK SAND PURE  
TREND  
brushed  
**nd** ID no. 536 371



Allegro  
OAK  
EXQUISIT  
**Pm** ID no. 515 239

Allegro  
OAK  
TREND  
**Pm** ID no. 514 655  
**nL** ID no. 531 958



Allegro  
OAK  
TREND  
brushed  
**nd** ID no. 536 372

Allegro  
OAK  
STANDARD  
**Pm** ID no. 529 204  
**nL** ID no. 531 959



Allegro  
OAK  
TERRA  
**Pm** ID no. 515 246  
**nL** ID no. 531 961

Allegro  
OAK  
TUNDRA  
**Pm** ID no. 515 503



Allegro  
OAK PEARL GREY LIMEWASHED  
TREND  
brushed  
**Pm** ID no. 535 511

Allegro  
EICHE PURO CARAMEL  
TREND  
brushed  
**Pm** ID no. 535 512



Allegro  
SMOKED OAK  
**Pm** ID no. 514 660  
**nL** ID no. 531 962

Allegro  
AFRICAN OAK  
**Pm** ID no. 518 787  
**nL** ID no. 531 963



Allegro  
BEECH STEAMED  
TREND  
**Pm** ID no. 518 552

Allegro  
CAN. MAPLE  
FAVORIT  
**Pm** ID no. 536 373



Allegro  
AMERICAN WALNUT  
EXQUISIT/TREND  
**Pm** ID no. 518 568

Allegro  
AMERICAN WALNUT  
COUNTRY  
**Pm** ID no. 518 567



Allegro  
AMBER ROBINIA  
FAVORIT  
**Pm** ID no. 529 235

Seasonal variations in grading are possible.



# Range Strip Allegro

Pm: permaDur high finish | nD: naturaDur matt surface finish | nL: naturaLin *plus* natural oil finish

Allegro  
MERBAU  
Pm ID no. 518 561



Seasonal variations in grading are possible.

# Range Strip Prestige

Pm: permaDur high finish | nD: naturaDur matt surface finish | nL: naturaLin *plus* natural oil finish

Prestige  
OAK PURO WHITE  
MARKANT  
brushed  
nD ID no. 530 368



Prestige  
OAK SAND PURE  
MARKANT  
brushed  
nD ID no. 536 374

Prestige  
OAK  
MARKANT  
nL ID no. 530 365



Prestige  
OAK  
MARKANT  
brushed  
nD ID no. 536 375

Prestige  
OAK  
SAUVAGE  
nD ID no. 536 376



Prestige  
OAK  
SAUVAGE  
nL ID no. 536 377

Prestige  
SMOKED OAK  
MARKANT  
nL ID no. 530 371



Prestige  
AFRICAN OAK  
MARKANT  
nL ID no. 530 376

Seasonal variations in grading are possible.

# Range Strip Plank Scala

**Pm:** permaDur high finish | **nD:** naturaDur matt surface finish | **nL:** naturaLin *plus* natural oil finish

Plank 1-Strip Scala  
**OAK PURO WHITE  
MARKANT**  
brushed 2V  
**nL** ID no. 529 179



Plank 1-Strip Scala  
**OAK PURO INVISIBLE  
SAUVAGE**  
brushed 2V  
**nL** ID no. 536 378

Plank 1-Strip Scala  
**OAK  
MARKANT**  
brushed 2V  
**nD** ID no. 536 379



Plank 1-Strip Scala  
**OAK  
MARKANT**  
brushed 2V  
**nL** ID no. 529 177

Plank 1-Strip Scala  
**OAK  
SAUVAGE**  
brushed 2V  
**nD** ID no. 536 380



Plank 1-Strip Scala  
**OAK  
SAUVAGE**  
brushed 2V  
**nL** ID no. 529 401

Plank 1-Strip Scala  
**OAK PURO GREY  
SAUVAGE**  
brushed 2V  
**nL** ID no. 535 515



Plank 1-Strip Scala  
**SMOKED OAK  
MARKANT**  
brushed 2V  
**nL** ID no. 529 181

\*Seasonal variations in grading are possible.

# Product range Strip Plank 1-Strip Maxim

**Pm:** permaDur high finish | **nD:** naturaDur matt surface finish | **nL:** naturaLin *plus* natural oil finish

Plank 1-Strip Maxim  
**OAK SAND WHITE  
MARKANT**  
brushed 2V  
**nD** ID no. 536 381



Plank 1-Strip Maxim  
**OAK SAND WHITE  
SAUVAGE**  
brushed 2V  
**nD** ID no. 536 382

Plank 1-Strip Maxim  
**OAK PURO WHITE  
MARKANT**  
brushed 4V  
**nL** ID no. 532 264



Plank 1-Strip Maxim  
**OAK PURO WHITE  
SAUVAGE**  
brushed 4V  
**nL** ID no. 532 266

Plank 1-Strip Maxim  
**OAK SAND PURE MARKANT**  
brushed 2V  
**nD** ID no. 536 383



Plank 1-Strip Maxim  
**OAK SAND PURE  
SAUVAGE**  
brushed 2V  
**nD** ID no. 536 384

\*Seasonal variations in grading are possible.

# Product range Strip Plank 1-Strip Maxim

**Pm:** permaDur high finish | **nD:** naturaDur matt surface finish | **nL:** naturaLin *plus* natural oil finish

Plank 1-Strip Maxim  
**OAK  
MARKANT**  
brushed 2V  
**nD** ID no. 536 385



Plank 1-Strip Maxim  
**OAK  
MARKANT**  
brushed 4V  
**nL** ID no. 532 260

Plank 1-Strip Maxim  
**OAK  
SAUVAGE**  
brushed 2V  
**nD** ID no. 536 386



Plank 1-Strip Maxim  
**OAK  
SAUVAGE**  
brushed 4V  
**nL** ID no. 532 262

Plank 1-Strip Maxim  
**OAK SAND GREY  
MARKANT**  
brushed 2V  
**nD** ID no. 536 387



Plank 1-Strip Maxim  
**OAK SAND GREY  
SAUVAGE**  
brushed 2V  
**nD** ID no. 536 388

Plank 1-Strip Maxim  
**SMOKED OAK  
MARKANT**  
brushed 4V  
**nL** ID no. 536 389



Plank 1-Strip Maxim  
**SMOKED OAK  
SAUVAGE**  
brushed 4V  
**nL** ID no. 536 390

\*Seasonal variations in grading are possible.

# Range Strip Trio SL/Trio

**Pm:** permaDur high finish

Trio SL  
**OAK  
FAVORIT**  
**Pm** ID no. 532 148



Trio  
**OAK  
FAVORIT**  
**Pm** ID no. 533 179

\*Seasonal variations in grading are possible.

# High-quality finishes

Dimensionally stable when exposed to moisture, perfectly suitable for use over underfloor heating, and can be sanded several times.

HARO Strip Parquet is a finely crafted premium product. To fully display its outstanding quality, professional installation by an expert is particularly important. It is the expert installation that turns our parquet into the perfect floor. Unlike 3-layer parquet, HARO Strip Parquet is firmly glued to the subfloor. Therefore, preparation of the subfloor is absolutely necessary. For full details, please ask your HARO dealers – they will be happy to assist you.

## 1. Precise marking:

Exact planning is essential for a successful installation. Row for row the floor is first measured and then marked.



## 2/3. Prepare the subfloor:

The adhesive is spread evenly on the floor for the next row.



## 4. Glue down permanently:

To create a linear pattern, the parquet strips are positioned and pressed down in parallel rows.



HARO PROFESSIONAL  
PARQUET 4000  
STRIP ALLEGRO  
OAK PURO WHITE TREND  
BRUSHED  
naturalLin plus  
INSTALLATION PATTERN: HERRINGBONE

---

# Creative and inspiring

---

HARO Strip Parquet Allegro and Strip Parquet Prestige also offer you a greater choice and more possibilities regarding installation patterns. You can design different patterns to fit the style and layout of each room.



**Basket weave**  
This pattern creates a particularly striking effect in large rooms.



**Classical herringbone**  
Traditional installation pattern that creates a fascinating light play. Best suited for large rooms. (Also possible with HARO Strip Parquet Prestige).



**Herringbone**  
Modern and vibrant variation of the timeless, elegant herringbone theme. (Also possible with HARO Strip Parquet Prestige).



**Border Inlay**  
Traditional installation pattern that was widespread in upper-class residences in the 19th century.



**Regular pattern (English bond)**  
Here, the strips are installed in parallel rows, which are offset by half a strip length.

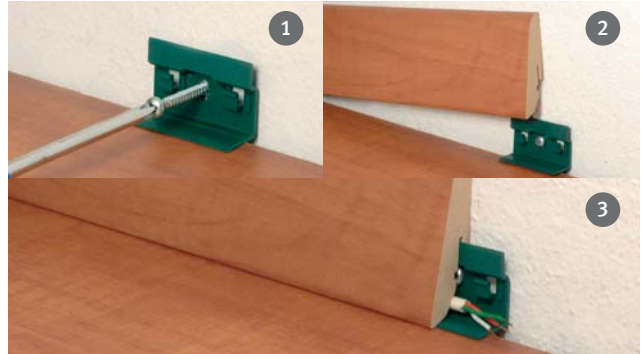


**Irregular pattern**  
The strips are installed in parallel rows, which are randomly offset and create a ship's deck look.

---

# Accessories, Cleaning and care

---



## Skirtings with system

Whether matching the floor or contrasting - our range of skirtings provides the finishing touch for every taste. For more information about the sheer endless design possibilities please contact your HARO dealer. Our elaborate skirting system makes it especially easy for you. Attach the fixation elements to the wall, slip the skirtings on – done.



## Underfloor heating

HARO Strip Parquet is suitable for installation over underfloor heating without restrictions.



## Transition mouldings

Transition mouldings elegantly join parquet floors or different floor coverings. They are constructed in a way that different heights between two floors can be balanced during the installation. This way you can create subtle transitions that harmoniously join two floor areas when the floors are not glued down. In that case transition mouldings are not necessary.

# clean & green – The revolution in natural floor care

We have developed the innovative clean & green floor care series for the sustainable care of HARO PARQUET. It makes it easier than ever to clean and maintain our floors and it is completely safe and environmentally friendly.

For regular dry cleaning of the HARO floor coverings, we recommend vacuum cleaners from Kärcher.  
For regular damp cleaning, we recommend the HARO flat wet mop.



Parquet Care 'aqua oil'

Special care product for oiled surfaces.

Parquet Care 'aqua shield'

Lasting renewal and maintenance of varnished parquet.

Parquet Care 'aqua oil white/aqua oil black'

Special care product for oiled white or dark surfaces.

Intensive cleaning 'active'

Eco floor care concentrate For deep cleaning of parquet.

Parquet cleaning product 'natural'

Eco-friendly floor care concentrate For regular cleaning of all parquet surfaces.



THE BEAUTY TREATMENT FOR PARQUET FLOORS

ONLY TWO PRODUCTS TO CLEAN AND MAINTAIN ALL SURFACES

